

# Midwest Energy, Inc. Current Comments

May 2024

Making energy work for YOU

## When In Doubt, Smooth It Out! Move Large Appliance Use Outside 3-7 p.m. and Save This Summer

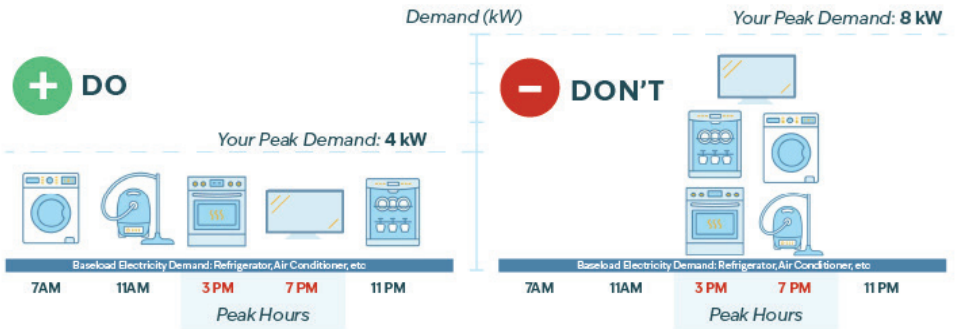
Midwest Energy's summer demand charges go into effect June 1. Demand charges began appearing on residential customer bills in Jan. 2023 with a \$0 multiplier, and remained at zero until Jan. 2024, when the billing demand multiplier went to \$1. This summer during the months of June - September, the billing demand multiplier goes to \$2.

Demand refers to the amount of electrical power being used at a given time, measured in kilowatts (kW). Midwest Energy bills demand based on your "peak demand," or the 15-minute interval where you are using the most kilowatts of electricity.

**During the months of June through September, demand is only measured between 3 p.m. and 7 p.m. CDT.** By measuring peak demand in such a narrow window, Midwest Energy customers have more ways to manage their energy usage and save. Customers who limit the use of large appliances between 3 p.m. and 7 p.m., or who move the use of heat-generating appliances like electric ovens and clothes dryers outside of the 3-7 p.m. window, will keep their peak demand lower, while keeping their homes cooler.

Peak demand appears on electric bills as "Billing Demand," on the upper right hand corner of the back page. During the summer months of June through September 2024, demand charges are equal to Billing Demand multiplied by \$2. During the non-summer months of October - May, peak demand is based on the 15-minute interval when peak kW is observed, at any point during the month. During non-summer

Spreading out the use of major appliances is the easiest way to manage your demand and control your electric bill.

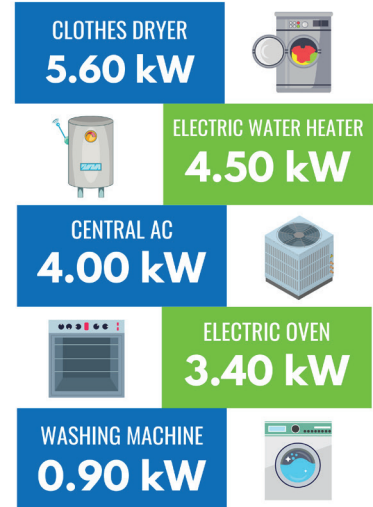


months in 2024, the Billing Demand multiplier is \$1.

Detailed information on your peak demand, down to 15-minute interval detail, is available by logging into your Midwest Energy account at [www.mwenergy.com](http://www.mwenergy.com), then clicking on the "Customer Connect" button.

For more information on demand charges, give us a call at 1-800-222-3121.

### DEMAND FOR COMMON APPLIANCES



### BILLING DEMAND MULTIPLIER

	2024	2025	2026
OCT-MAY	\$1	\$2	\$3
JUNE-SEPT 3-7 P.M.	\$2	\$4	\$6



MIDWEST ENERGY, INC.

30764-I-0235

# Spring Community Fund Recipients Announced

Midwest Energy's Community Fund, which benefits charitable, educational and nonprofit agencies in the co-op's service area, made one of its two annual disbursements in April.

A total of \$47,233 was awarded to 97 projects. A total of 122 applications requesting \$92,742 were received. Among applications, 22 were first-time program applicants.

Funding decisions are made by

local committees in each of Midwest's five community fund districts, and are comprised of two MWE

Grants range from \$50 to \$1,000, and are limited to one grant per project or event. Requests for

tangible items, long-lived community assets, or improvements to permanent assets are preferred over requests for expendable items (such as fireworks or event prizes).

Interested groups should click on the "Community" tab at [www.mwenergy.com](http://www.mwenergy.com) for details, and to complete a brief application.

Midwest Energy Service Area	Number Approved/Requested	Requested Dollars	Approved Dollars
Colby	24 of 26	\$16,777	\$11,562
Great Bend	27 of 35	\$23,487	\$10,000
Hays	24 of 32	\$29,447	\$18,761
Phillipsburg	11 of 16	\$13,050	\$3,190
Scott City	11 of 13	\$9,982	\$3,720

employees and five to seven community members from that area.

The application deadline for the Fall 2024 funding period is Oct. 1.

## 2024 Board of Directors Nominations Due July 5

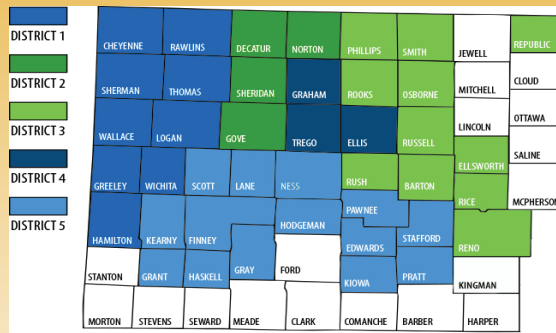
Now is the time to submit nominations for anyone interested in running for the Midwest Energy Board of Directors. Director positions and represented districts up for re-election include:

**District 3** (1 position): Counties of Phillips, Smith, Rooks, Osborne, Russell, Rush, Barton, Ellsworth, Rice, Reno and Republic.

**District 4** (1 position): Counties of Graham, Trego and Ellis.

**District 5** (1 position): Counties of Scott, Lane, Ness, Kearny, Finney, Hodgeman, Pawnee, Stafford, Grant, Haskell, Gray, Edwards, Kiowa and Pratt.

Nominees must be a resident in one of the counties in the district for which he or she is nominated.



Nominations should be submitted online by July 5, 2024 at [www.mwenergy.com](http://www.mwenergy.com) by clicking "About," and then the "Board of Directors Nominations" link. Nominations can also be made by sending the nominee's name, address and phone number to:

John Blackwell  
c/o Midwest Energy, Inc.  
1330 Canterbury  
Hays, KS 67601

The nominating committee will select nominees from the names submitted. Election winners will be announced at the Annual Meeting on October 21, 2024.

### ENERGY EFFICIENCY TIP OF THE MONTH

Looking for an easy way to manage home energy use? Smart plugs are inexpensive and offer convenient solutions for scheduling and controlling your favorite electronic devices.

With smart plugs, you can easily manage your coffee maker, lighting, home office equipment, video game consoles and more. Smart plugs can help you manage devices through a smart phone app, your home assistant or voice control. By conveniently powering off or scheduling devices, you can save energy (and money!).

Source: [energystar.gov](http://energystar.gov)

Atwood, KS • Colby, KS • Great Bend, KS • Hays, KS

Phillipsburg, KS • Scott City, KS • WaKeeney, KS



1-800-222-3121  
[www.mwenergy.com](http://www.mwenergy.com)

Printed on Partially Re-Cycled Paper



1330 Canterbury • Hays, Kansas 67601